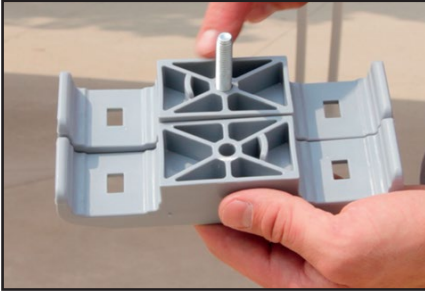


# CONNECTING CLAMP SETUP INSTRUCTIONS



## Step 1



Remove the clamps from the box. Each set of connecting clamps will consist of two halves and a tightening knob.

## Step 2



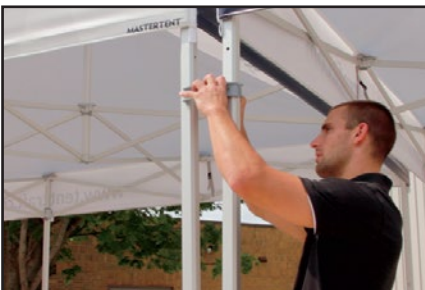
Set the two tents that are being connected next to each other so the base plates at the bottom of the legs are almost touching.

## Step 3



Unscrew the tightening knob from the connecting clamps so the two halves can be separated.

## Step 4



Place one half of the clamp on the inside of the two tent legs, with a leg from each tent falling into the grooves in the clamp.

## Step 5



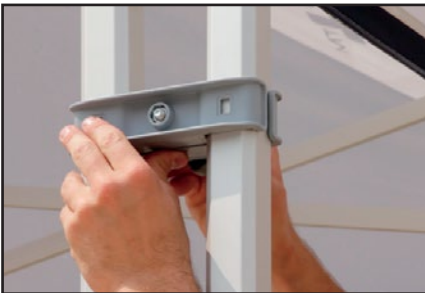
Place the opposite half of the clamp on the outside of the two tent legs, with a leg from each tent falling into the grooves in the clamp.

## Step 6



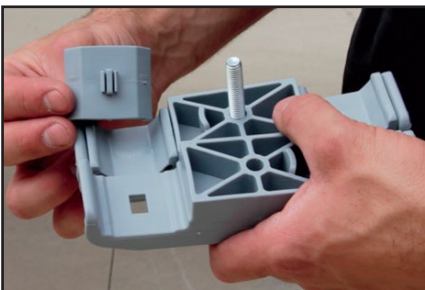
Slide the whole clamp up or down the legs to the desired height.

## Step 7



Tighten the knob into the clamp and twist until it is tight. The knob can be threaded through from the inside or the outside – user may choose either.

## Step 8



**\*\*Optional\*\*** If using a mighty tent or attaching the clamps to the bottom of a Mastertent, insert the spacers into the clamps before installing them onto the tent leg.