

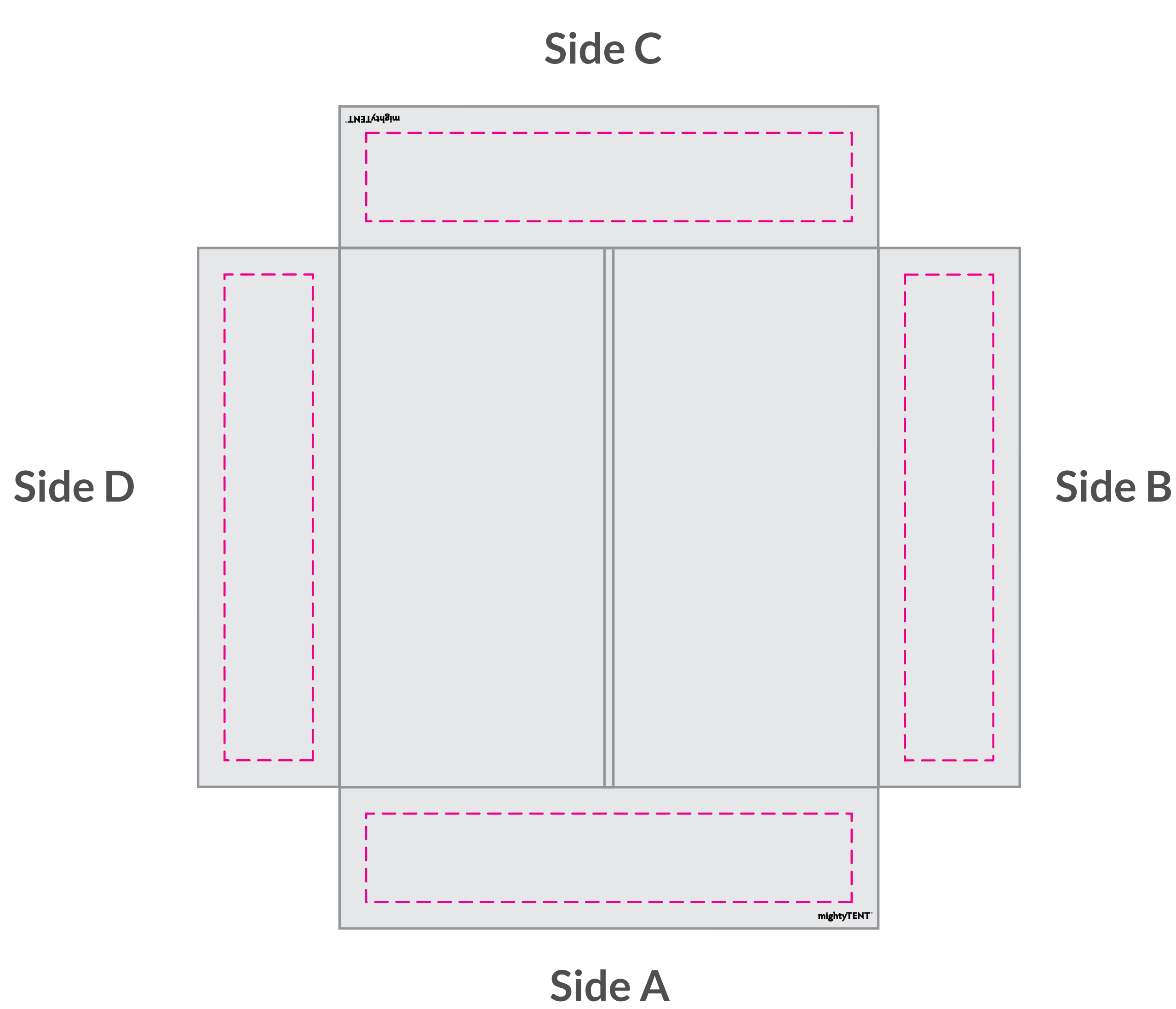
PRODUCTION SKETCH.

Job Name: 00000000 Job Number: 00000000-00

mightyTENT®
5'x5' Series 30 USA
(10% Scale)



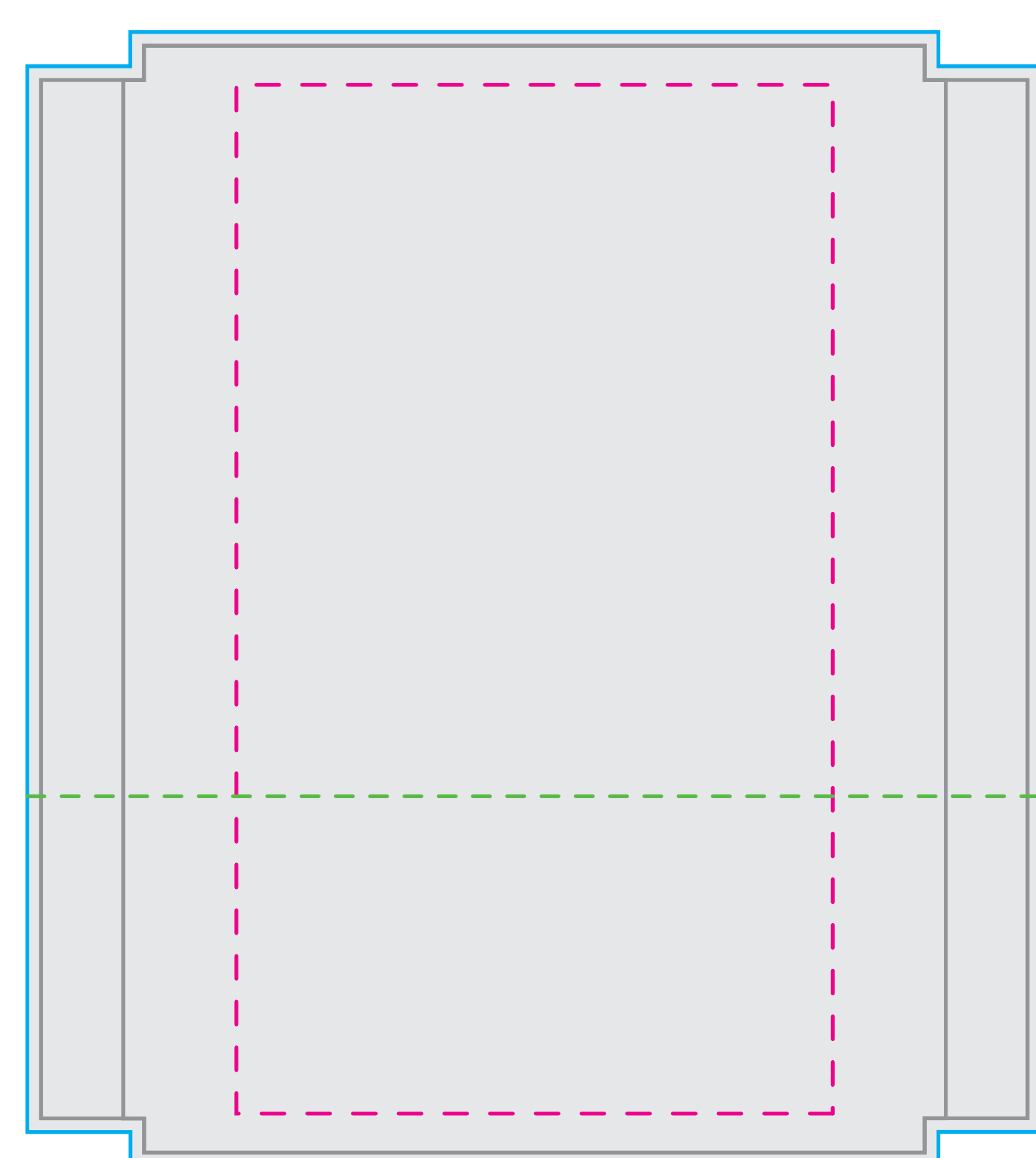
***ATTENTION CUSTOMER*:** Please review your sketch carefully, paying special attention to spelling, grammar, print locations, finish sizes and safety lines. Once a sketch is approved, TentCraft begins production on your order exactly as shown in the approved sketch. Any changes requested post-approval are subject to additional fees and production timelines. The 3/4 view shown below is for conceptual purposes only.



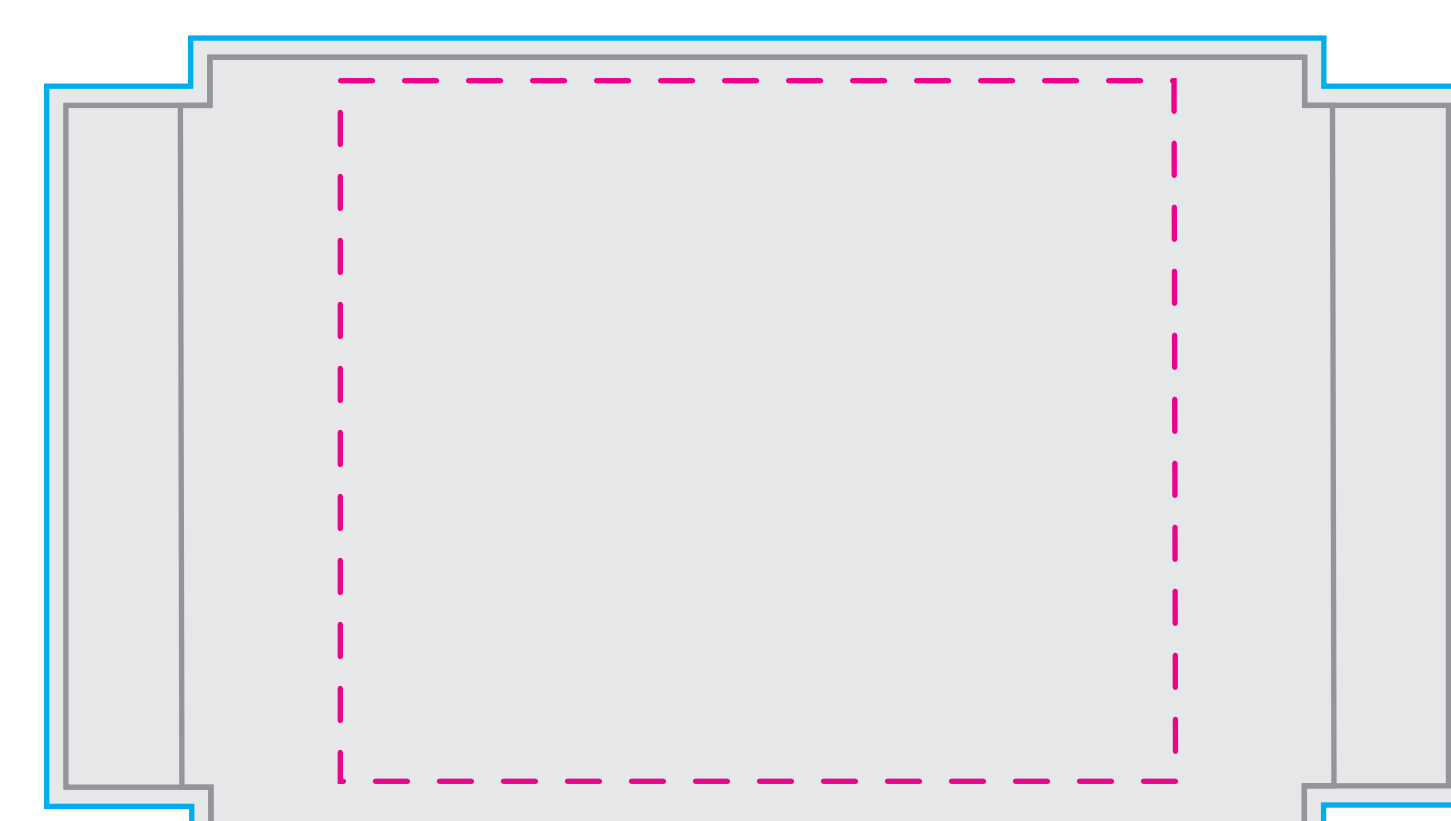
Job# 00000000-00 Quantity: 1pc
5' ROOF UV on POLY
FINISH SIZE: 248"h x 60"w



Job# 00000000-00 Quantity: 1pc
5' ROOF VALANCE PRINTABLE THERMAL
FINISH SIZE: 16"h x 61"w



Job# 00000000-00 Quantity: 1pc
5' FULL WALL - UV on POLY
FINISH SIZE: 80.75"h x 60"w



Job# 00000000-00 Quantity: 1pc
5' HALF WALL - UV on POLY
FINISH SIZE: 40.5"h x 60"w



Retractable Banner



Media Wall



Table Cover



Director's Chairs



Flags
(available in 4 shapes and 16 sizes)

Pantone®	Fabric	Binding
123C	WHITE	WHITE

Seam
Seam in material falls here.

Safety
Keep logos and text within this area.

Visual
This line represents the finished size of the product.

Bleed
Extend your art to this line to be sure there aren't white edges on your art.

Please confirm proper Pantone colors.
Note: Mastertent Logo Prints on 2 Opposite Valances.

Ask us about these exciting add-ons!