

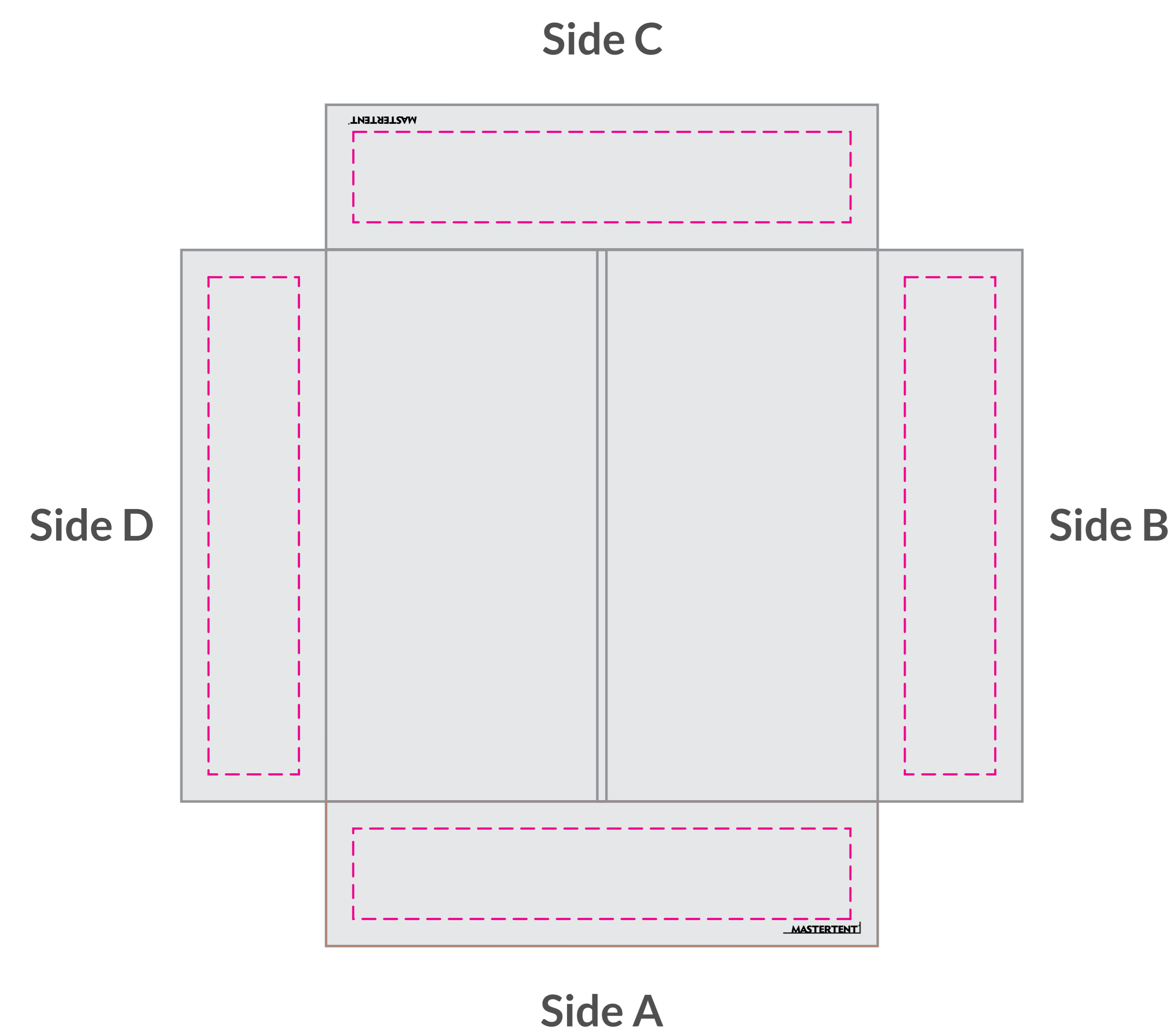
PRODUCTION SKETCH.

MASTERTENT®
5'x5' Series 43
(10% Scale)

Job Name: 00000000 Job Number: 00000000-00



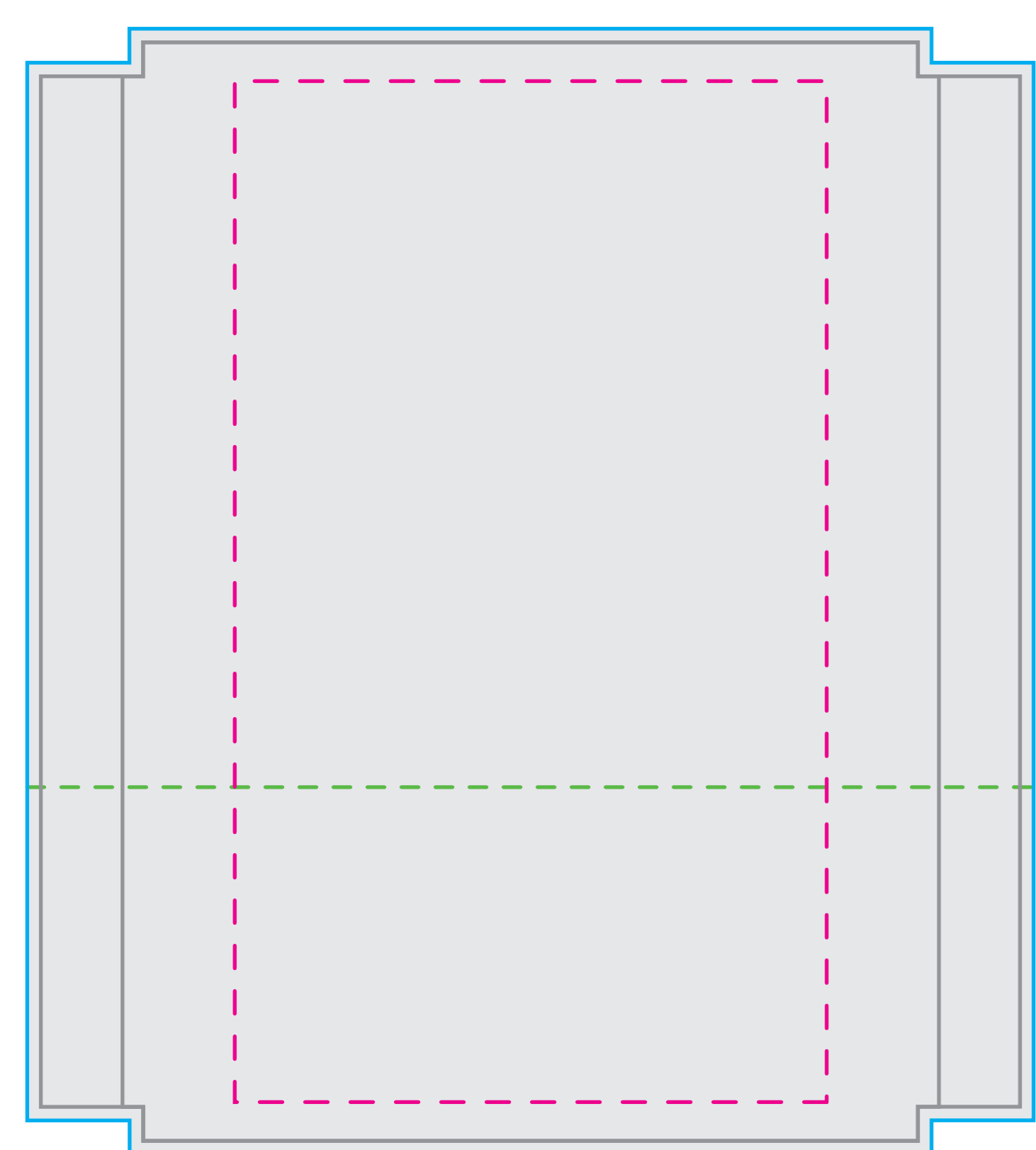
***ATTENTION CUSTOMER*:** Please review your sketch carefully, paying special attention to spelling, grammar, print locations, finish sizes and safety lines. Once a sketch is approved, TentCraft begins production on your order exactly as shown in the approved sketch. Any changes requested post-approval are subject to additional fees and production timelines. The 3/4 view shown below is for conceptual purposes only.



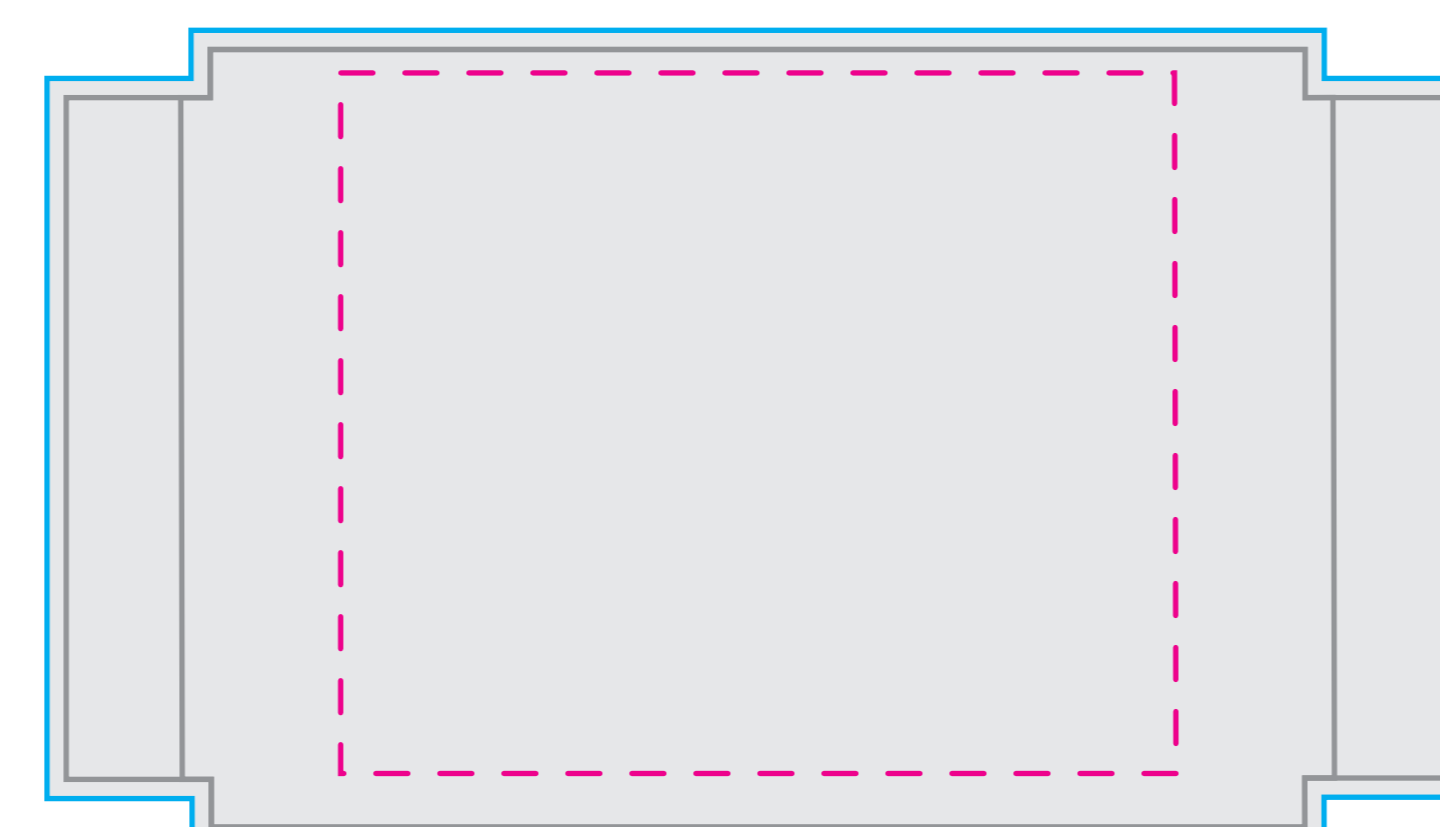
Job# 00000000-00 Quantity: 1pc
5' ROOF UV on POLY
FINISH SIZE: 248"h x 60"w



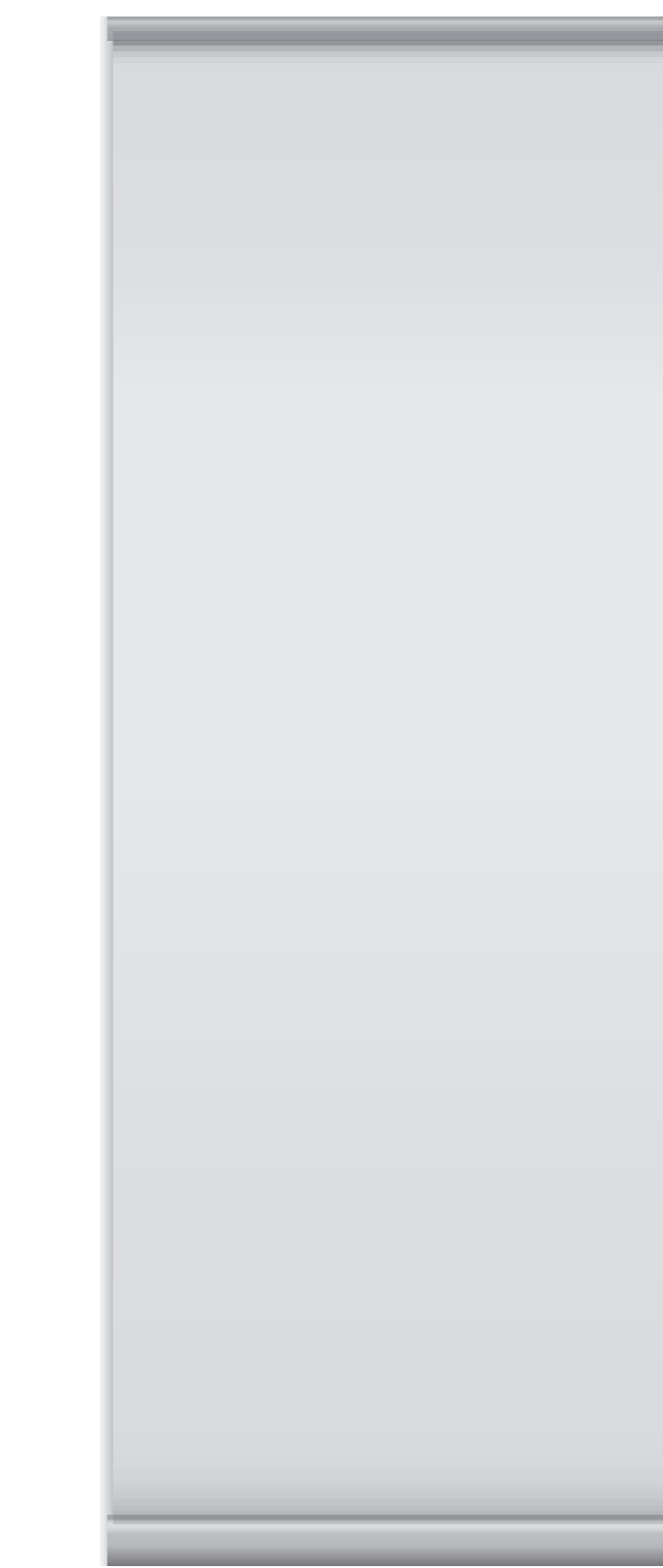
Job# 00000000-00 Quantity: 1pc
5' ROOF VALANCE PRINTABLE THERMAL
FINISH SIZE: 16"h x 61"w



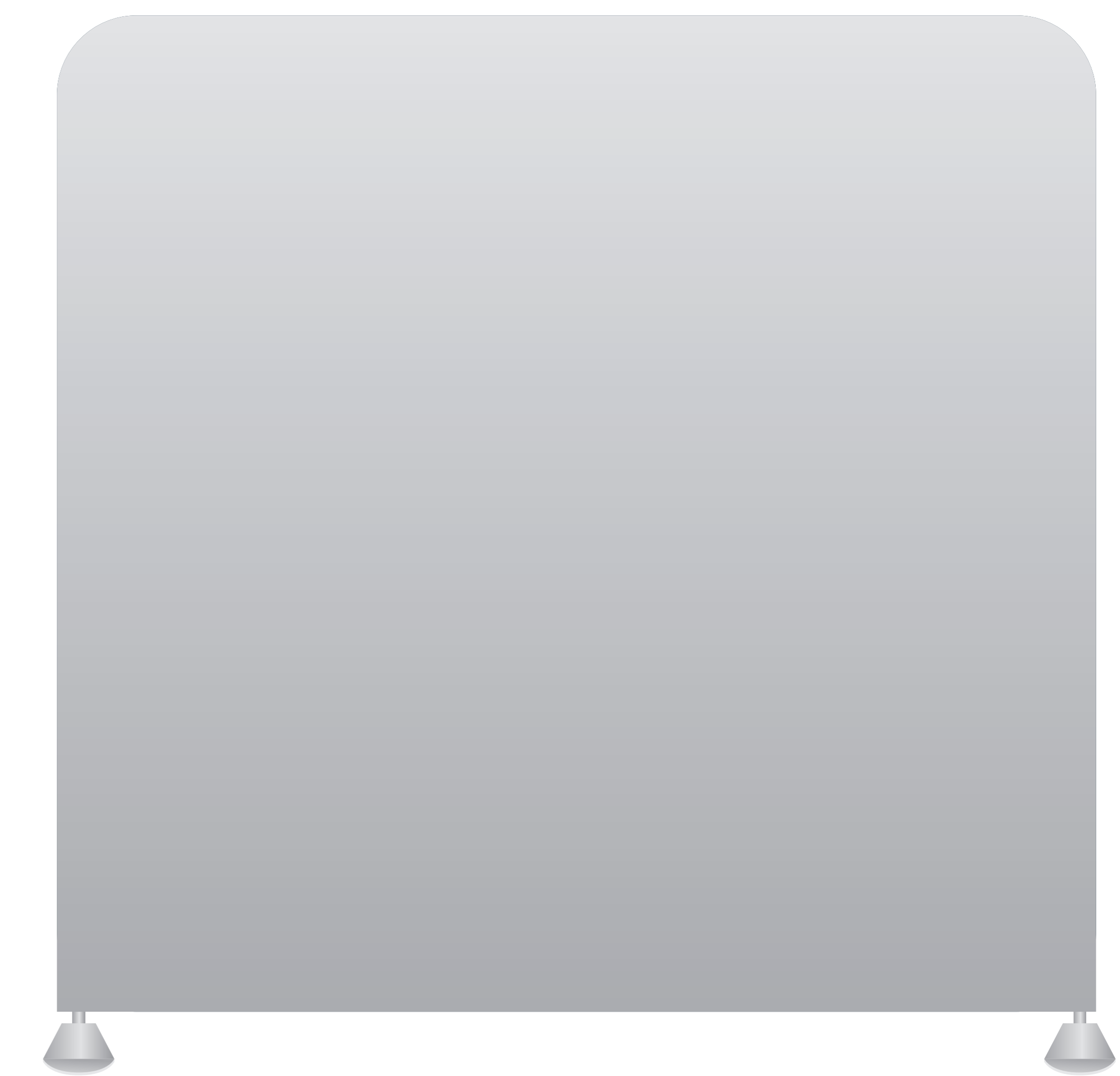
Job# 00000000-00 Quantity: 1pc
5' FULL WALL - UV on POLY
FINISH SIZE: 80.75"h x 60"w



Job# 00000000-00 Quantity: 1pc
5' HALF WALL - UV on POLY
FINISH SIZE: 40.5"h x 60"w



Retractable Banner



Media Wall



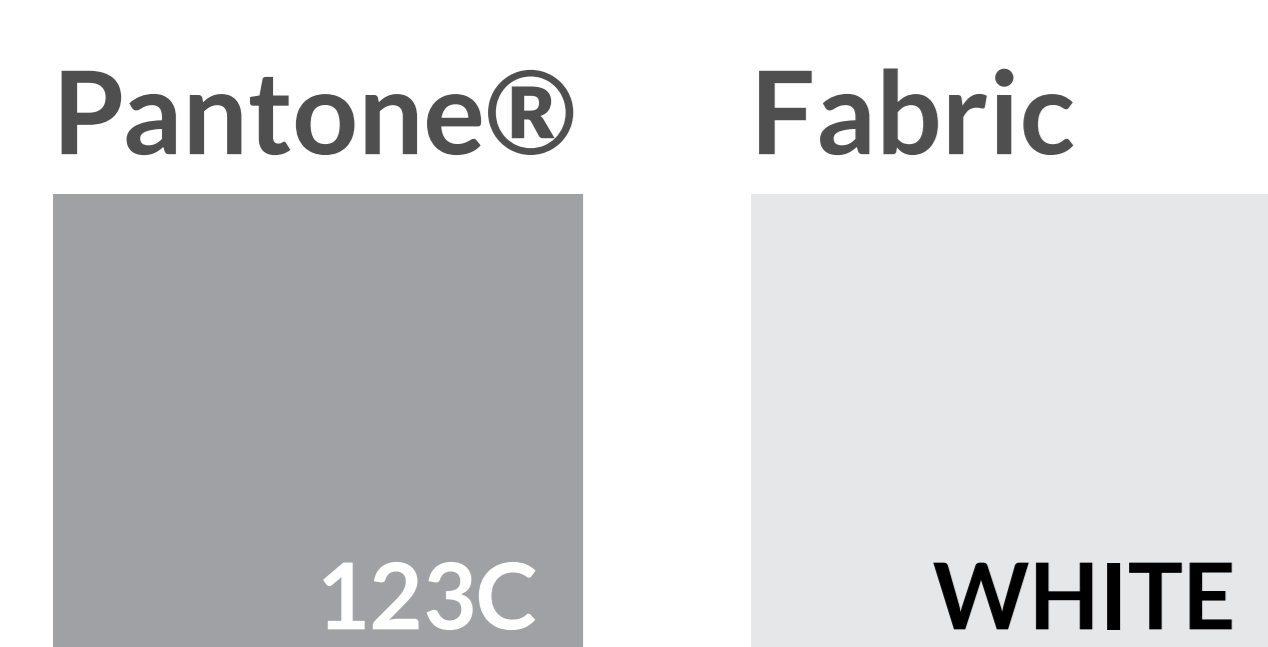
Table Cover



Director's Chairs



Flags
(available in 4 shapes and 16 sizes)



- Seam**
Seam in material falls here.
- Safety**
Keep logos and text within this area.
- Visual**
This line represents the finished size of the product.
- Bleed**
Extend your art to this line to be sure there aren't white edges on your art.

Please confirm proper Pantone colors.
Note: MasterTent Logo Prints on 2 Opposite Valances.

Ask us about these exciting add-ons!