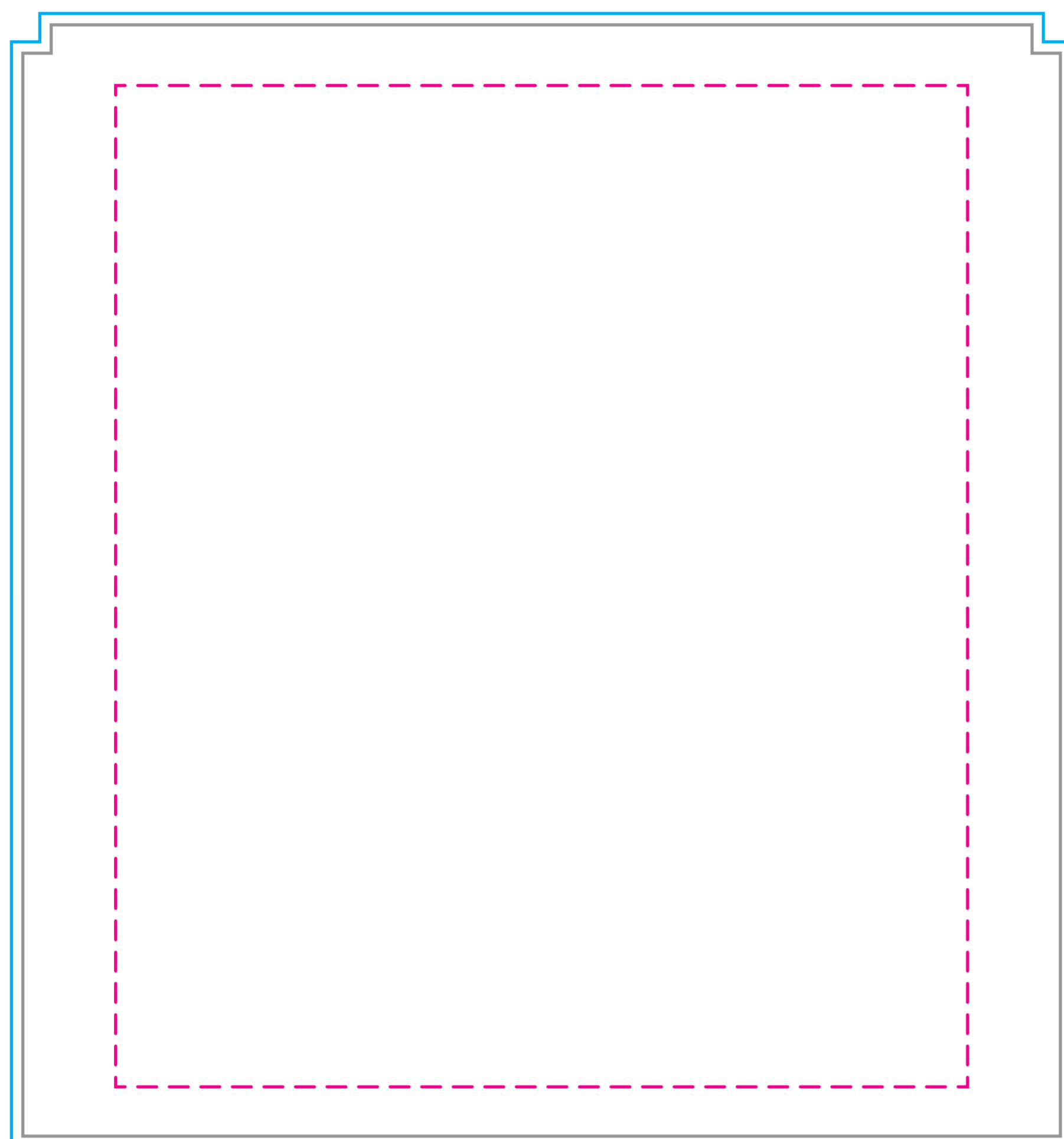
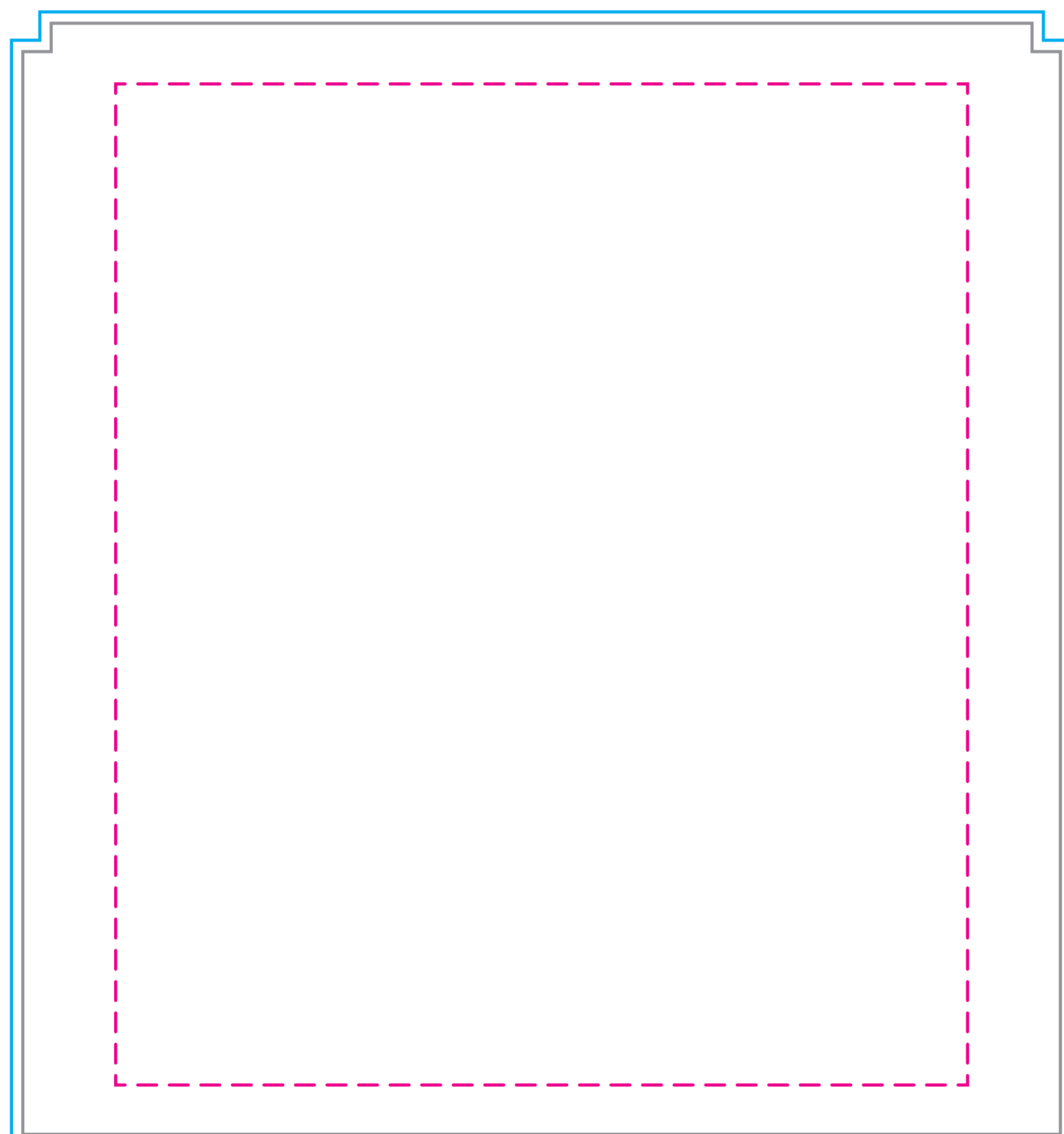


## 7.5ft Hextend Wall (10% Scale)

INSIDE



OUTSIDE



**7.5' HEXTEND FULL WALL**

**BLEED: 100" h x 93.5" w**

**VISUAL: 98" h x 91.5" w**

**SAFETY: 88.3" h x 75.1" w**

### KEY

These lines will not be printed on the final product.

 <b>Seam</b> Seam in material falls here.	 <b>Safety</b> Keep logos and text within this area.	 <b>Visual</b> This line represents the finished size of the product.	 <b>Bleed</b> Extend your art to this line to be sure there aren't white edges on your art.
--	---	--	--

## Customer Art Submission Guidelines

**Preferred File Formats:** Adobe Illustrator, Photoshop, Tiffs and Adobe PDF.

**Scale:** Please set up your file at 10% scale, with embedded graphics of at least 720 dpi.

**Example:** To set up a 80.75" h x 130" w full wall, your file size should be 8.075" h x 13" w.

**Fonts:** All fonts must be converted to outlines. If possible, font files (OTF or TTF) should also be included.

**Images:** 72 dpi at full size (720 dpi @ 10% scale) is optimal for photographic images. Any vector art will print at its highest possible resolution. Images should be embedded, or the native file provided.

**Color Profile:** Set up photographic images in CMYK color mode (RGB photos will be converted). Specific Pantone colors should have PMS Coated Swatch assigned to all art and copy.

**\*PLEASE PACKAGE ALL ART FILES THAT INCLUDE FONTS AND IMAGES.**

**\*\*ALL ELECTRONIC FILES SHOULD BE ACCOMPANIED BY A COMPOSITE PDF.**

