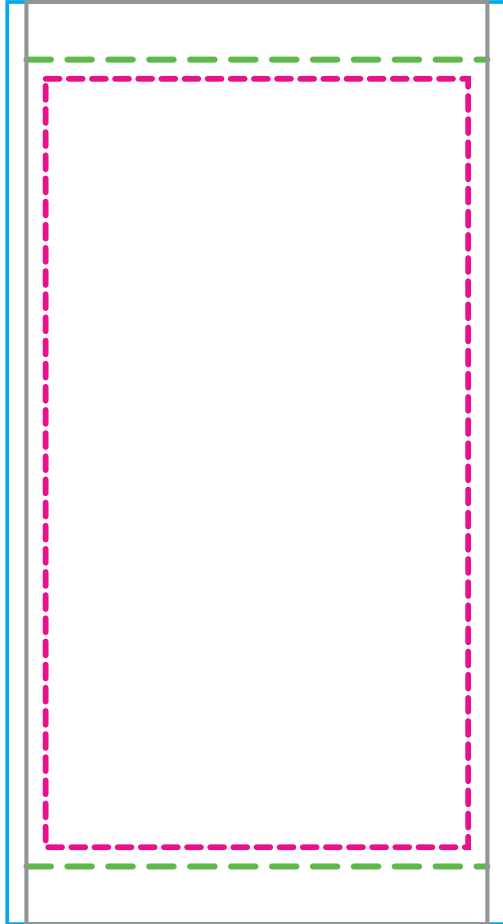


# 2x4 Pole Banner (10% Scale)



## KEY

These lines will not be printed on the final product.

**Seam**  
Seam in material falls here.

**Safety**  
Keep logos and text within this area.

**Visual**  
This line represents the finished size of the product.

**Bleed**  
Extend your art to this line to be sure there aren't white edges on your art.

**Visibility**  
Place any key text and logos above this guide line for optimal visibility.

## Customer Art Submission Guidelines

**Preferred File Formats:** Adobe Illustrator, Photoshop, Tiffs and Adobe PDF.

**Scale:** Please set up your file at 10% scale, with embedded graphics of at least 720 dpi.

**Example:** To set up a 80.75"h x 130"w full wall, your file size should be 8.075"h x 13"w.

**Fonts:** All fonts must be converted to outlines. If possible, font files (OTF or TTF) should also be included.

**Images:** 72 dpi at full size (720 dpi @ 10% scale) is optimal for photographic images. Any vector art will print at its highest possible resolution. Images should be embedded, or the native file provided.

**Color Profile:** Set up photographic images in CMYK color mode (RGB photos will be converted). Specific Pantone colors should have PMS Coated Swatch assigned to all art and copy.

**\*PLEASE PACKAGE ALL ART FILES THAT INCLUDE FONTS AND IMAGES.**

**\*\*ALL ELECTRONIC FILES SHOULD BE ACCOMPANIED BY A COMPOSITE PDF.**

