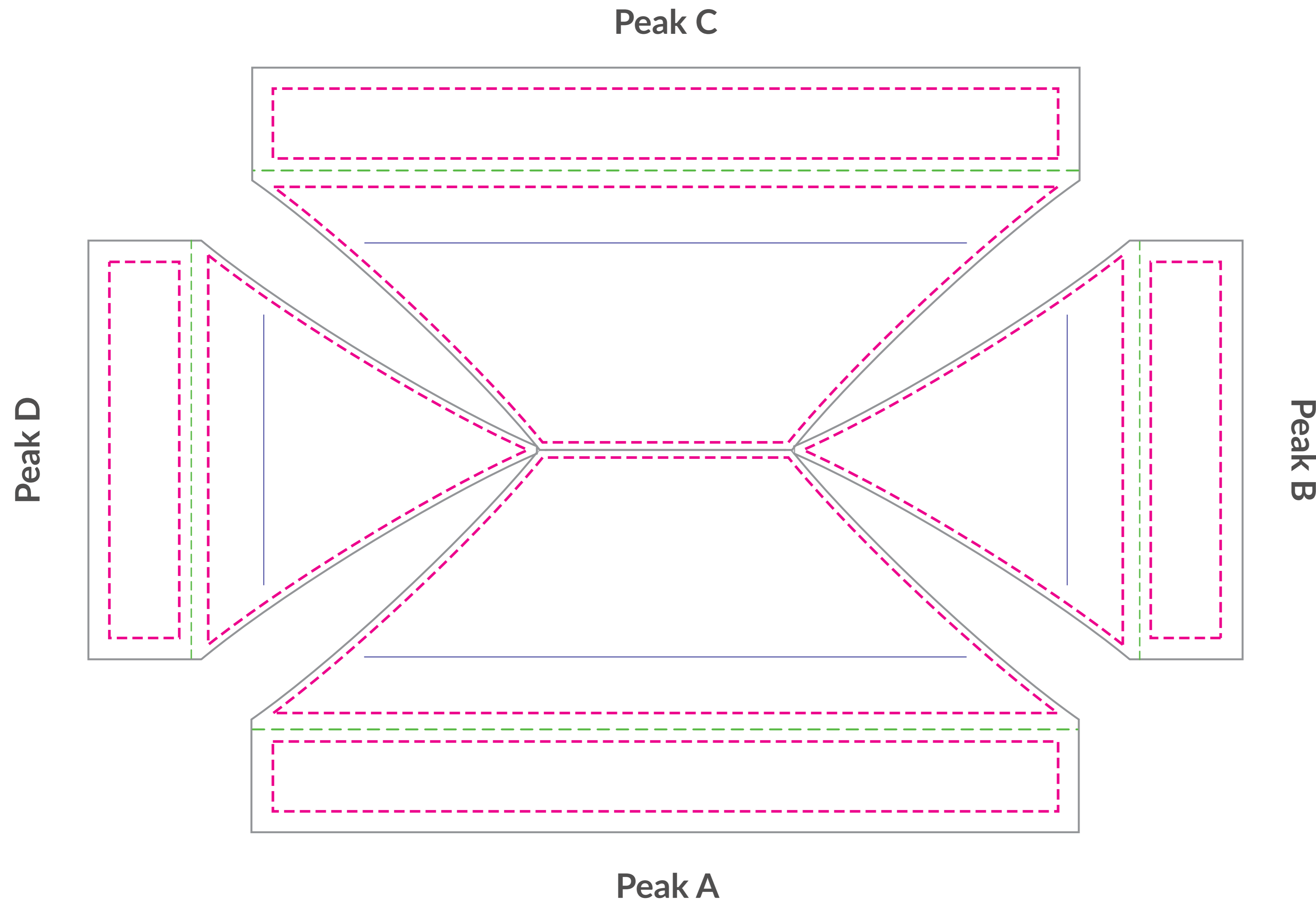


5x10 mightyTENT®

(10% Scale)



5'x10' MIGHTY ROOF

VISUAL: A/C 54.7" h x 118.4" w B/D 64.1" h x 59.9" w

PEAK SAFETY: A/C 36.8" h x 112.2" w B/D 45.7" h x 55.7" w

VALANCE SAFETY: A/C 10" h x 112.3" w B/D 10" h x 53.8" w

KEY

These lines will not be printed on the final product.

- Seam**
Seam in material falls here.
- Safety**
Keep logos and text within this area.
- Visual**
This line represents the finished size of the product.
- Bleed**
Extend your art to this line to be sure there aren't white edges on your art.
- Visibility**
Place any key text and logos above this guide line for optimal visibility.

Customer Art Submission Guidelines

Preferred File Formats: Adobe Illustrator, Photoshop, Tiffs and Adobe PDF.

Scale: Please set up your file at 10% scale, with embedded graphics of at least 720 dpi.

Example: To set up a 80.75" h x 130" w full wall, your file size should be 8.075" h x 13" w.

Fonts: All fonts must be converted to outlines. If possible, font files (OTF or TTF) should also be included.

Images: 72 dpi at full size (720 dpi @ 10% scale) is optimal for photographic images. Any vector art will print at its highest possible resolution. Images should be embedded, or the native file provided.

Color Profile: Set up photographic images in CMYK color mode (RGB photos will be converted). Specific Pantone colors should have PMS Coated Swatch assigned to all art and copy.

***PLEASE PACKAGE ALL ART FILES THAT INCLUDE FONTS AND IMAGES.**

****ALL ELECTRONIC FILES SHOULD BE ACCOMPANIED BY A COMPOSITE PDF.**

