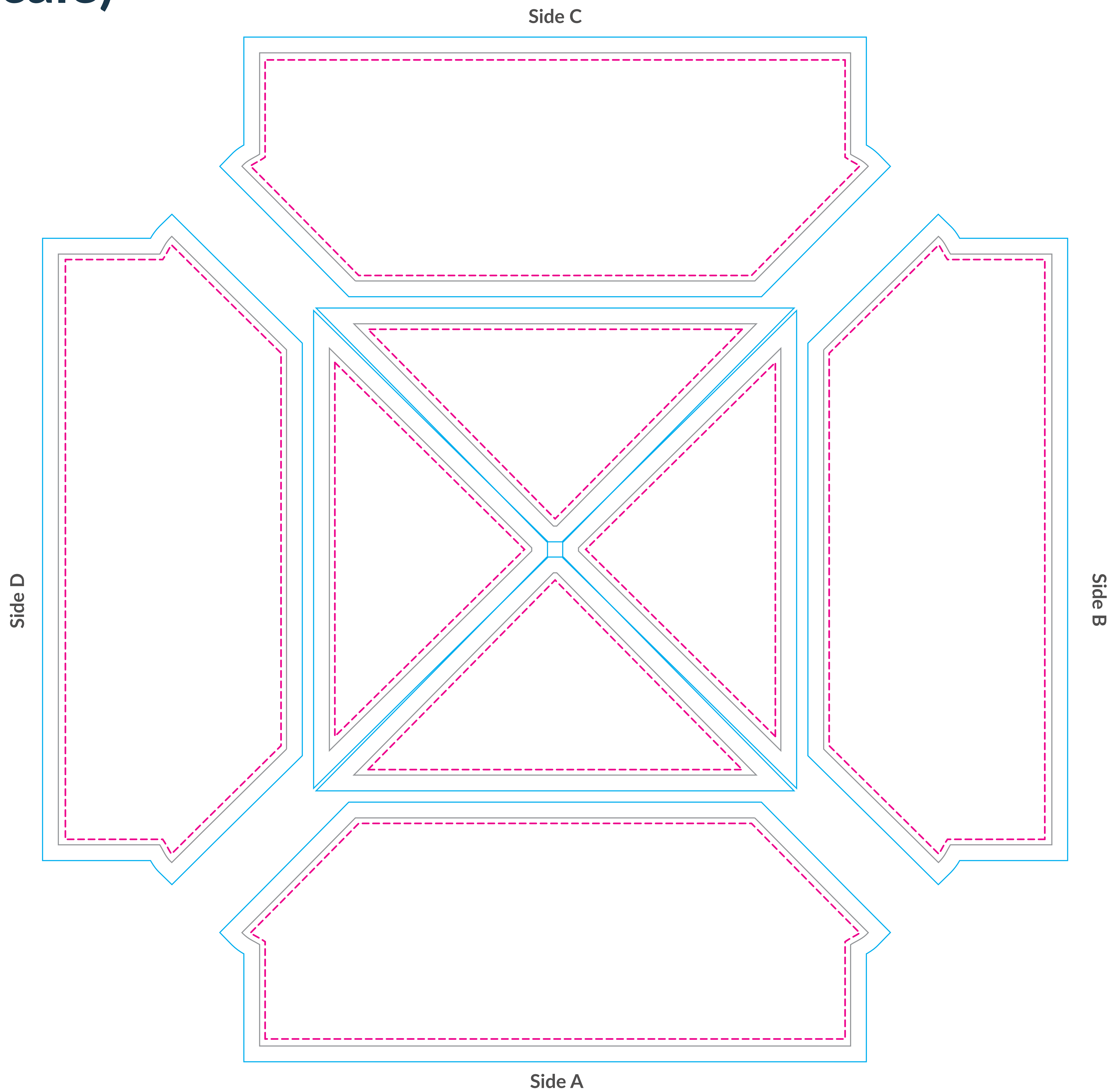


13x13 SQUARE GYBE





(10% Scale)



13'x13' SQUARE GYBE
BLEED: LOWER 65.8" h x 170" w UPPER 59.3" h x 121.2" w
VISUAL: LOWER 57.8" h x 158.8" w UPPER 51.3" h x 102" w
PEAK SAFETY: LOWER 54.7" h x 154.5" w UPPER 48" h x 94.9" w

KEY

These lines will not be printed on the final product.

- | | | | |
|--|---|--|--|
| 
Seam
Seam in material falls here. | 
Safety
Keep logos and text within this area. | 
Visual
This line represents the finished size of the product. | 
Bleed
Extend your art to this line to be sure there aren't white edges on your art. |
|--|---|--|--|

Customer Art Submission Guidelines

Preferred File Formats: Adobe Illustrator, Photoshop, Tiffs and Adobe PDF.

Scale: Please set up your file at 10% scale, with embedded graphics of at least 720 dpi.

Example: To set up a 80.75" h x 130" w full wall, your file size should be 8.075" h x 13" w.

Fonts: All fonts must be converted to outlines. If possible, font files (OTF or TTF) should also be included.

Images: 72 dpi at full size (720 dpi @ 10% scale) is optimal for photographic images. Any vector art will print at its highest possible resolution. Images should be embedded, or the native file provided.

Color Profile: Set up photographic images in CMYK color mode (RGB photos will be converted). Specific Pantone colors should have PMS Coated Swatch assigned to all art and copy.

***PLEASE PACKAGE ALL ART FILES THAT INCLUDE FONTS AND IMAGES.**

****ALL ELECTRONIC FILES SHOULD BE ACCOMPANIED BY A COMPOSITE PDF.**

