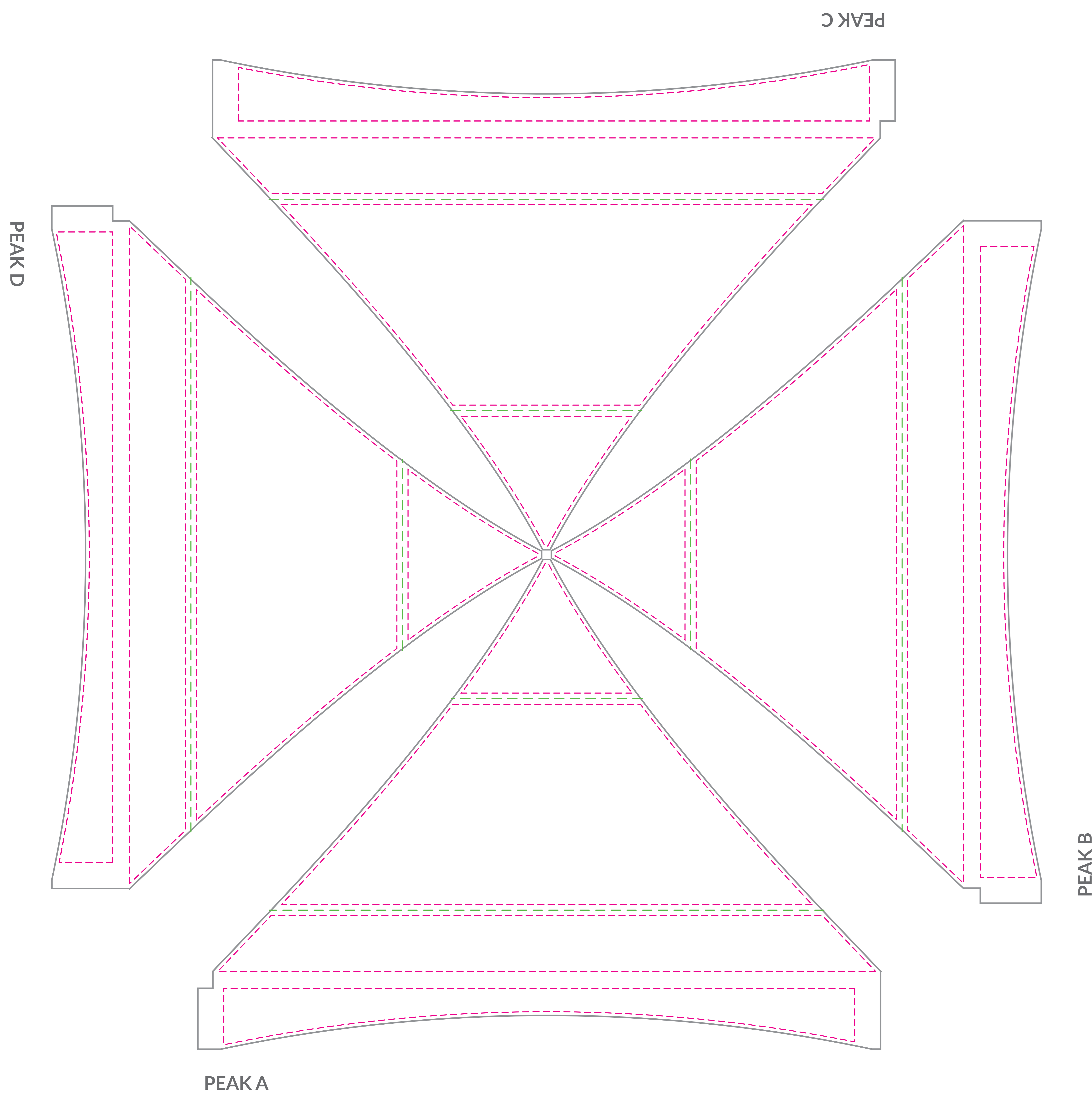


# E-Series 15x15 Roof

(10% Scale)



## 15' E-SERIES FRAME ROOF

VISUAL (PER PEAK): 132" h x 184" w

**ROOF SAFETY (PER PEAK): 110" h x 177.2" w**

**VALANCE SAFETY (PER PEAK): 15.2" h x 170" w**

## KEY

These lines will not be printed on the final product.

**Seam**  
Seam in material falls here.

**Safety**  
Keep logos and text within this area.

**Visual**  
This line represents the finished size of the product.

**Bleed**  
Extend your art to this line to be sure there aren't white edges on your art.

## Customer Art Submission Guidelines

**Preferred File Formats:** Adobe Illustrator, Photoshop, Tiffs and Adobe PDF.

**Scale:** Please set up your file at 10% scale, with embedded graphics of at least 720 dpi.

**Example:** To set up a 80.75" h x 130" w full wall, your file size should be 8.075" h x 13" w.

**Fonts:** All fonts must be converted to outlines. If possible, font files (OTF or TTF) should also be included.

**Images:** 72 dpi at full size (720 dpi @ 10% scale) is optimal for photographic images. Any vector art will print at its highest possible resolution. Images should be embedded, or the native file provided.

**Color Profile:** Set up photographic images in CMYK color mode (RGB photos will be converted). Specific Pantone colors should have PMS Coated Swatch assigned to all art and copy.

**\*PLEASE PACKAGE ALL ART FILES THAT INCLUDE FONTS AND IMAGES.**

**\*\*ALL ELECTRONIC FILES SHOULD BE ACCOMPANIED BY A COMPOSITE PDF.**

